



GET LEARNING



20 MINUTES



PREPARATION
NEEDED

A SAFE CROSSING



AIM

Crossing roads can be difficult and scary. Thankfully we have different types of road crossings to help us. Can you identify the road crossings and use them safely?

WHAT YOU'LL NEED

- 'Types of Road Crossings' Signs
- 'A Safe Crossing to School' Sheet
- Pens / Pencils

GET LEARNING: A SAFE CROSSING

THEME: STAYING SAFE



LEADER PREPARATION

A leader will need to gather the equipment required for the activity, including downloading and printing the signs and sheets.




Download 'Types of Road Crossings' Signs & 'A Safe Crossing to School' Sheet



GETTING INTO THE ACTIVITY

Types of Road Crossings

- 1  Print the four 'Types of Road Crossings' signs and place them in the four corners of your room.
- 2 Ask the children to identify each crossing and read the information underneath. Can they give any examples of each of the road crossings in your local area? Can they think of any other types of road crossings that we haven't included in this activity?
- 3 Ask all the children to run around the room. When you shout 'Cross the Road' everyone must go and stand by one of the road crossings. Once everyone has settled, a leader (who isn't looking at where people are), should call out one of the road crossing names. Any children stood by that crossing, should get a point.
- 4 For those stood in the nominated corner, they now have a chance to win a bonus point. Read one of the quiz questions out. If they get the answer correct, award a bonus point.
- 5 Continue playing the game until a child hits 10 points (or for a certain amount of time).

A Safe Crossing to School Activity

- 1 Ask the group if any of them walk to school? If some do, ask them to describe their route. Do they have to cross the road at any point? Do they use road crossings to do that?
- 2 Explain that being able to identify the safest place to cross a road is an important life skill. Sometimes the safest route isn't always the quickest or most direct route, but safety is always the most important thing.
- 3 Hand children a copy of the 'A Safe Crossing to School' activity sheet. Tell the children that at the top of the sheet is your home and at the bottom of the sheet is their school.
- 4 Children need to draw a line showing the safest route, using the road crossings, to get to school.



IDEAS TO TAKE THIS FURTHER...

Set up a pretend road and crossing point in your meeting space. Nominate most of the group to be cars going up and down the road. Children could then take it in turns to use the road crossing safely, deciding which of the road crossings they'll use (Zebra, Island, Pelican etc) and showing how to use it safely.

A SAFE CROSSING QUIZ QUESTIONS

Q1. What colour stripes does a zebra crossing have?

- A. Green
- B. White
- C. Orange

Q2. What do you call a place where you need to stop halfway across the road?

- A. Traffic cone
- B. Traffic jam
- C. Traffic island

Q3. When crossing a road, you should always 'Stop, Look & ?

- A. Listen
- B. Run
- C. Blink

Q4. When should you run across a road?

- A. When you're in a rush
- B. Only during the day, never at night.
- C. Never

Q5. What kind of lights do a zebra crossing have?

- A. Traffic lights
- B. Black and white poles with yellow lights
- C. Christmas lights

Q6. Pelican crossings are controlled by pedestrians using what?

- A. A button
- B. Voice commands
- C. Mind control

Q7. Traffic Islands are designed to allow pedestrians to do what?

- A. Stop the traffic
- B. Have a sit down and sunbathe on the island
- C. Cross a road in two halves

Q8. If the green man is flashing when you get to a pelican crossing, what should you do?

- A. Quickly run across - you'll make it in time
- B. Stop and wait for the next safe crossing

Q9. Where is the safest place to cross a road if there isn't a crossing to use?

- A. On a straight clear piece of road
- B. On a bend
- C. Behind a parked car

Q10. When is it safe to use a zebra crossing?

- A. Straight away when you get there
- B. 5 seconds after getting to it
- C. Once you can see cars have stopped

Q11. What must you do when you cross a road?

- A. Always look and listen whilst crossing
- B. Listen to music
- C. Run across quickly

Q12. What should you do if you're halfway across the road on a pelican crossing and the green man starts to flash?

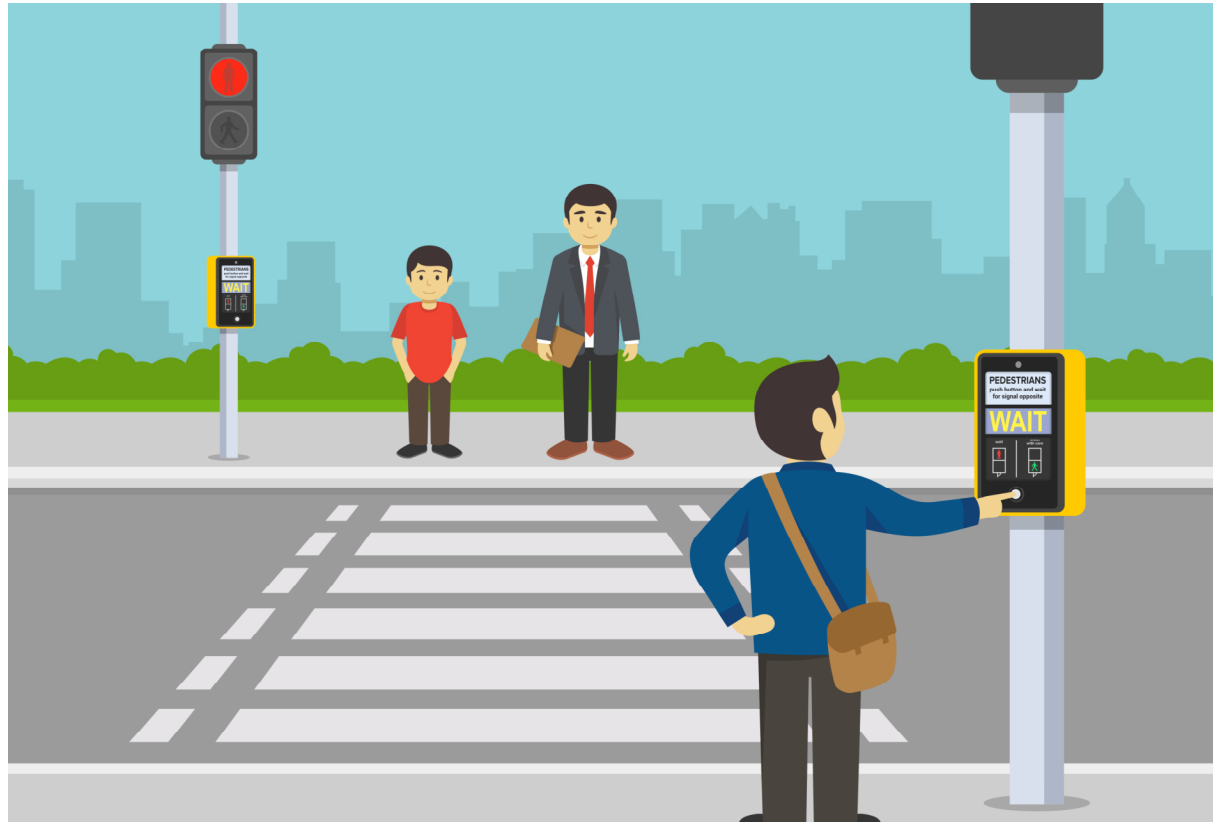
- A. Carry on your crossing
- B. Stop exactly where you are
- C. Return to the pavement you started on

ZEBRA CROSSING



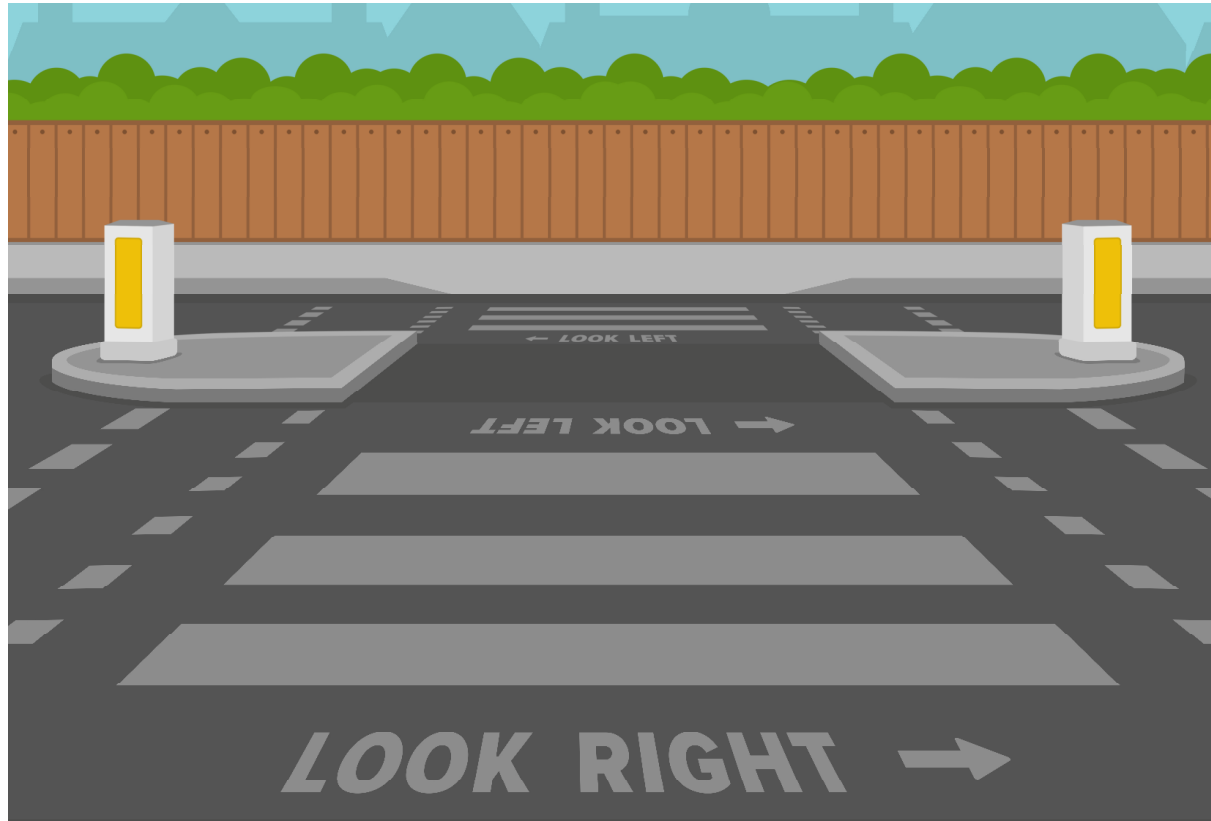
Zebra crossings usually have white lines on the floor and have black and white poles, with yellow lights on the top.

PELICAN CROSSING



Pelican crossings have a button to press, which will in time stop the traffic. A green man will then show on the other side of the road to show it is safe to cross.

TRAFFIC ISLANDS



Island crossings are often found on busy roads and help people to cross the road in two halves. Cars don't stop for you on these crossings.

UNSAFE CROSSING



It's always best to use safe road crossings, where they are available. Running across roads is very dangerous and should never be done.

A SAFE CROSSING TO SCHOOL

Can you safely get from your house to school? Draw the route you'd take, making sure to cross the roads at the safest places.

