



GET ACTIVE

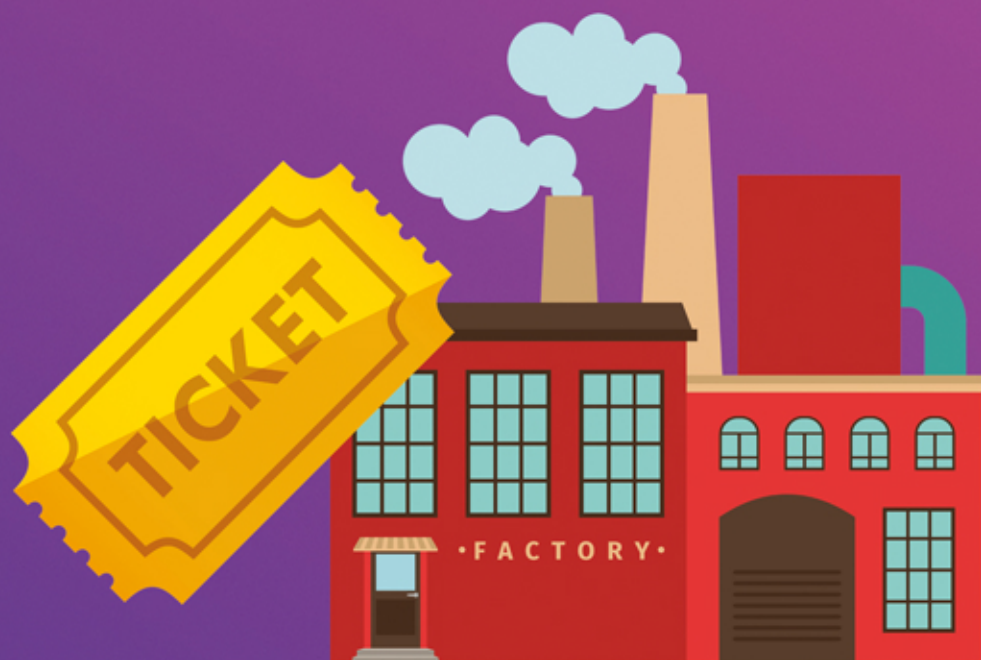


20 MINUTES



PREPARATION
NEEDED

CHARLIE AND THE CHALLENGE FACTORY



AIM

A challenge based team game themed around Charlie and the Chocolate Factory. Take on the 15 challenges, each one having a golden ticket to win. Which team will have the most golden tickets at the end?

WHAT YOU'LL NEED

- Charlie & The Challenge Factory Challenge Sheet
- Golden Tickets (Challenge Sheet)
- Pen & Paper
- Bucket & Ball
- Bean Bag
- Maltesers
- Scrunched up Balls of Paper

GET ACTIVE: CHARLIE AND THE CHALLENGE FACTORY

THEME: PLAYING GAMES



LEADER PREPARATION

A leader will need to download and print the challenge sheet and golden tickets. Golden tickets could be created by cutting up yellow paper if you are without a printer. Make sure to read through the challenges beforehand and have the equipment ready.



Download 'Charlie and the Challenge Factory' Challenge Sheet



GETTING INTO THE ACTIVITY

- 1 Split the group into teams, ideally with roughly 4 in each team. Each team should think of a chocolate inspired team name.
- 2 On the challenge sheet are 15 different challenges, each with a golden ticket to win. Some challenges require just one person from each team to take part and others require the whole team. Go through the challenges, making sure each of the team members are having an equal number of goes. Award a golden ticket (found on the challenge sheet) to the winning team after each round.
- 3 At the end of the game each team should count the golden tickets they have won. The team with the most golden tickets is the winner.

The challenges given on the sheet are just some ideas. These can be adapted or expanded to best suit your group and space.



DID YOU KNOW?

- Charlie and the Chocolate Factory was written by Roald Dahl in 1964.
- The story has since been made into two films.
- Roald Dahl is the author of other brilliant stories including James and the Giant Peach and the BFG.
- As a boy, Roald Dahl used to help Cadbury test chocolate. This is thought to be the inspiration behind Charlie's character.



IDEAS TO TAKE THIS FURTHER...

Continue the theme of Charlie and the Chocolate Factory. This could be by designing a brand-new chocolate bar, having a chocolate quiz or reading the first chapter of the book.



KEEPING EVERYONE SAFE

Some of the challenges require running around the meeting space. Ask children to do this carefully, paying attention to other people and obstacles around them. Where chocolate / sweets are used, check allergies beforehand.

CHARLIE AND THE CHALLENGE FACTORY

- 1) **A-Z of chocolate.** Team challenge. Give each team a pen and paper and 3 minutes to think of a chocolate bar for each letter of the alphabet. The team with the most letters covered wins the golden ticket.
- 2) **Boys names beginning with C.** Nominate one person from each team. The nominated players must take turns naming boys names beginning with 'C' (i.e Charlie). Keep going, until someone can't think of a name, pauses for longer than 10 seconds, or repeats a name already given. Last person standing wins a golden ticket.
- 3) **Golden Tickets.** There were 5 golden tickets in Charlie and the Chocolate Factory. Find 5 identical things in this room. Go! (Nominated challenge, with only one person from each team playing). Quickest team to find 5 identical items wins the golden ticket.
- 4) **Describe the best new chocolate bar.** One person from each team is nominated. They have to come up with a brand new chocolate bar (i.e new flavours / combinations etc). Give 30 seconds of thinking time and then each person gives their pitch. A leader should judge who has created the best new bar. Winner gets a golden ticket.
- 5) **The Charlie Bucket Challenge.** Charlie's surname was Bucket. Who can throw a bean bag into a bucket from the furthest distance? One team member from each team should be nominated for this challenge. The person with the furthest distance wins the golden ticket.
- 6) **Which Chocolate Bar?** Read out this description of a famous chocolate bar. A contrasting combination of crispy cereal and soft, pillowy nougat, layered up and coated in smooth milk chocolate. Each team must write the name of the chocolate bar they think it is. Any team with the correct answer gets a golden ticket. (Answer = Double Decker).
- 7) **Roald Dahl Stories.** Nominate one person from each team. The nominated players must take turns naming Roald Dahl stories. Keep going until someone can't think of one, pauses for longer than 10 seconds, or repeats a story already given. Last person standing wins a golden ticket.
- 8) **Find it!** One person from each team should be nominated to play. Explain that they will need to find items in the room beginning with C-H-O-L-A-T-E (the letters that make up chocolate). One item for each letter is needed. The quickest team to bring all 7 items back to their team wins the golden ticket.
- 9) **I Spy.** I spy with my little eye something beginning with C..... A leader should spot an item beginning with C. Teams one at a time can have a guess. Continue going around the teams until one team guesses correctly. The winning team get the golden ticket.
- 10) **Blueberry Roll.** Violet had to be rolled out the factory as a giant blueberry. Place a target on the floor (sheet of paper) a distance away and a nominated player from each team should roll a ball carefully towards it. Closest ball wins the golden ticket.
- 11) **A Tiny Oompa Loompa.** Oompa Loompas were known for being very small. Find the smallest thing in the room. You have 15 seconds. Go! (Nominated challenge, with only one person from each team playing). Smallest item wins the golden ticket.
- 12) **Mike Teavee.** Mike Teavee was a character addicted to television. Give a nominated player in each team a TV show. They should each go back to their team (at the same time) and act it out as a charade. First team to guess correctly wins the golden ticket.
- 13) **Malteser Catch.** Give a nominated player in each team 5 Maltesers. Each player (one at a time) must throw a Malteser in the air and try to catch it in their mouth. (A leader should judge if the Malteser went high enough in the air to be counted). The team with the most successful catches wins the golden ticket.
- 14) **Veruca Salt.** Veruca Salt was judged to be a 'bad nut' by the nut judging squirrels. Around the room are hidden scrunched up balls of paper (nuts). There is one less nut than teams playing. Each team who finds a nut will get a golden ticket. The team which doesn't find a nut is the 'bad nut' of this round and receive nothing. (A leader will need to hide the scrunched up balls around the room before the game)
- 15) **Smarties Colours.** There are 8 colours in a packet of smarties. Write down all 8 colours. Each team with the correct 8 colours can be rewarded with a golden ticket. (Team challenge). Answer = Red, orange, blue, green, yellow, pink, violet and brown

