



GET LEARNING

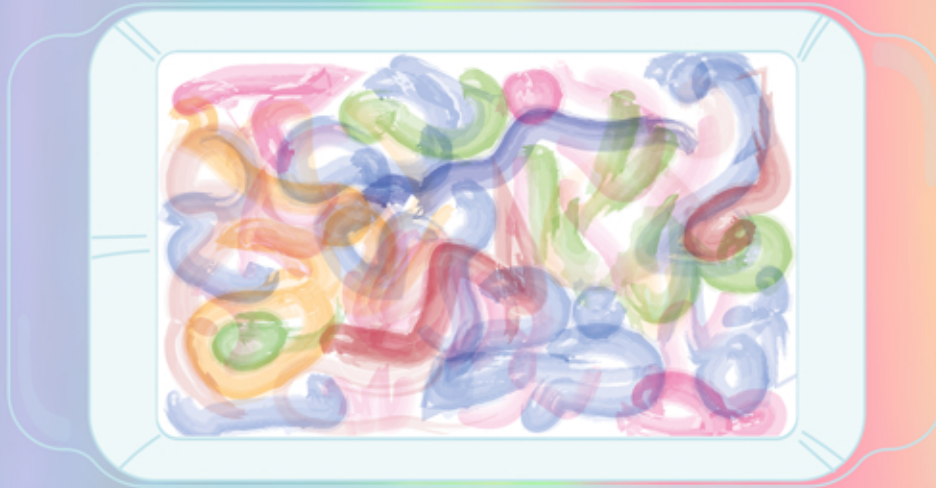


15 MINUTES



PREPARATION
NEEDED

MAGICAL MILK



GETTING INTO THE ACTIVITY

Create magical milk, watching as the colours swirl around the tray.

Pour milk onto a shallow tray or similar. Where possible give each child their own or they could share in a small group. Carefully place drops of different food colouring onto the milk. Use the pipette to do this and try to spread the dots of colour around the tray.

Dip the end of the cotton bud into washing up liquid. Now gently place the cotton bud into the milk, near to one of the colours. Hold it still for 10-15 seconds. What starts to happen? Take the cotton bud out and dip it into another part of the milk (try not to move the cotton bud around whilst it is in the milk). The milk should start swirling around, mixing up the colours and making incredible patterns. Continue doing this, trying to make patterns of colour in the milk. Compare your patterns to someone else's.

The Science: Milk has fat in it. When the soap touches the milk, it begins to break that fat up. When the soap is near to the fat it moves around trying to attach itself to the fat, so it can start breaking it up - the food colouring is helping you to see this process.



WHAT YOU'LL NEED

- Full Fat Milk
- Shallow Tray
- Various Food Colourings
- Pipette
- Washing Up Liquid
- Cotton Buds



KEEPING EVERYONE SAFE

Maintain social distancing as required. Children should ideally have their own equipment.

Where equipment is shared, please ensure a hand hygiene break before and after. Some food colouring can stain clothes, so please be careful.