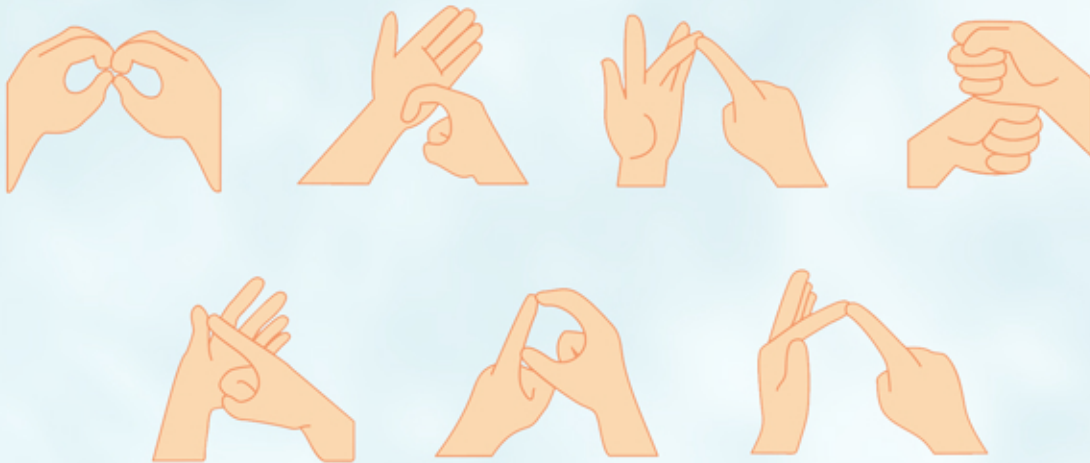


SIGN LANGUAGE



GET LEARNING



30 MINUTES



READY TO GO

GETTING INTO THE ACTIVITY

Sign Language is a visual language used by those who are deaf or have hearing impairments. Roughly 145,000 people in the UK use it as their preferred language.

Finger Spelling sign language is used to help communicate words which don't have a sign, such as names and places. It can also be used by people to spell out words, where the person might not know the sign.

Use the worksheet at the bottom of this pack to learn some of the different letters.

Can you spell out your name, the word hello, the village, town or city you live in? What other words can you sign using the finger spelling worksheet. Give the sheet to a family member and sign a word to them. Can they work out what you are signing? For more information about sign language head to www.british-sign.co.uk.

Ask a grown-up to take a video of you signing your name and share it with your BB group or post on social media using #BBatHOME.

WHAT YOU'LL NEED

- British Sign Language Finger Spelling Worksheet

NOTES FOR PARENTS & CARERS

All activity should be supervised by an adult and an adult should initiate any contact with the BB group and/or share on social media.

Sign Language

British Sign Language -
Finger Spelling

