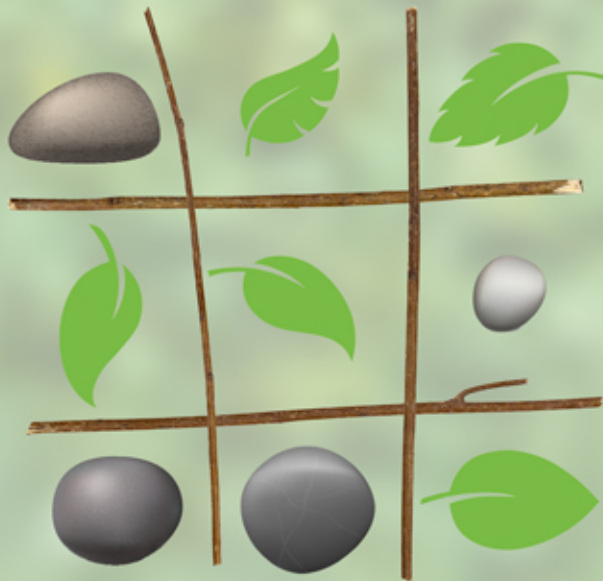


NATURE GAMES



GET ADVENTUROUS



30 MINUTES



PREPARATION NEEDED



GETTING INTO THE ACTIVITY

Use natural items such as stones, twigs and leaves to play some classic games such as noughts and crosses or connect four

Depending on the game you wish to play, you'll need a selection of stones, twigs and leaves (or other natural items). Once you have collected them, give the following games a try:

Noughts and Crosses: Set up a grid with twigs and then play noughts and crosses with your natural item. For example, stones could be noughts and leaves as crosses. Three in a row equals a win.

Connect Four: Set up or draw a large grid. It should be 7 boxes wide and 6 boxes high. Play as per normal connect four rules, but with natural items such as stones and leaves. 4 of the same items in a line (horizontal, vertical or diagonal) equals a win.

Take a photo of your nature games and share it with your BB group or post on social media using #BBatHOME.



WHAT YOU'LL NEED

- Stones / Twigs / Leaves etc



NOTES FOR PARENTS & CARERS

All activity should be supervised by an adult. An adult should initiate any contact with the BB group and/or share on social media.