

Bringing the BB adventure to you ...



**Weekly Activity Pack**  
6th to 12th April

**#BBATHOME**



**World Records: Most Socks**



**Stargazing**



**Easter Rocky Road**



**Easter On Twitter**



**My #BBatHOME Challenge**



**Jigsaw Puzzle**



# WORLD RECORDS: MOST SOCKS



GET ACTIVE



10 MINUTES



IN THE  
CUPBOARD



## GETTING INTO THE ACTIVITY

Can you break the world record for the most socks put on one foot in 30 seconds?

- 1) Sit on a chair and have a pile of socks next to you.
- 2) Set a timer for 30 seconds.
- 3) Try and get as many socks on one foot as you can in 30 seconds. Each sock needs to be placed on the foot individually.

Can you beat the world record of 28 socks in 30 seconds? Try multiple times and see how close you can get.

Who can get the closest to breaking the world record? Record a video of the best attempt and share it with your BB group or post on social media using #BBatHOME.



## WHAT YOU'LL NEED

- Socks



## NOTES FOR PARENTS & CARERS

An adult should initiate any contact with the BB group and/or share on social media.

# STARGAZING



GET  
ADVENTUROUS



20 MINUTES



PREPARATION  
NEEDED

## ▶▶ GETTING INTO THE ACTIVITY

Head out into the garden, or stand on your doorstep, and take some time to look up into the sky to stargaze.

For this activity having a stargazing app would be useful to help identify stars and find constellations and planets. There are many free stargazing apps, such as 'SkyView Lite'.

Wait for a clear night and for it to be dark and then head outside and look up into the sky. With your stargazing app you'll be able to point it into the sky and as you move your phone around the app will identify the different stars, show you the constellations and point out any planets. You'll also be able to spot the International Space Station and some satellites.

What can you find in the night's sky?

Take a photo of you stargazing and share it with your BB group or post on social media using #BBatHOME.



## WHAT YOU'LL NEED

- Stargazing App (SkyView Lite)



## NOTES FOR PARENTS & CARERS

Please ensure the space used for stargazing is safe and appropriate. An adult should initiate any contact with the BB group and/or share on social media.

# EASTER ROCKY ROAD



GET CREATIVE



30 MINUTES



PREPARATION  
NEEDED

## ▶▶ GETTING INTO THE ACTIVITY

Create some Easter themed rocky road cakes. A simple recipe which is quick and easy to make.

- 1) In a large saucepan melt together the butter, chocolate and golden syrup over a gentle heat stirring constantly. Once melted, remove from the heat and leave to cool for at least 10 minutes. Stir occasionally to help cool.
- 2) Break your biscuits into small pieces and add to the cooled mixture. Also add the mini marshmallow and mix it all together.
- 3) Tip the mixture into a lined baking tin and spread it out to the corners. Push the mini eggs into the top of the mixture. Chill in the fridge for a couple of hours.
- 4) Cut the rocky road into small squares and then share with your family.

Take a photo of your Easter rocky road and share it with your BB group or post on social media using #BBatHOME.



## WHAT YOU'LL NEED

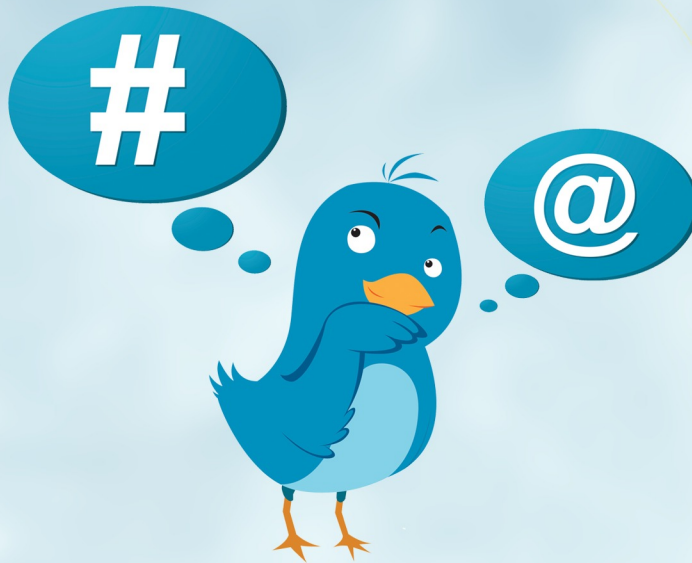
- 200g Digestive Biscuits
- 200g Milk Chocolate
- 2-3 tbsp Golden Syrup
- 100g Mini Marshmallows
- 135g Butter
- 1 Bag of Mini Eggs



## NOTES FOR PARENTS & CARERS

Please give necessary guidance and safety tips for working in a kitchen. An adult should initiate any contact with the BB group and/or share on social media.

# EASTER ON TWITTER



GET INTO THE BIBLE



20 MINUTES



READY TO GO

## ▶▶ GETTING INTO THE ACTIVITY

The crucifixion and resurrection of Jesus Christ happened thousands of years ago. But what if it happened today in a world full of social media and 24/7 news? How would it be reported?

Watch the YouTube video 'Surely this man was the son of God' by [rempstoneadventure](#). It shows the story of Easter as if it was being covered by BBC News today.

After watching the video think about: How do you think people today would respond to Jesus? How do you think the media would report Jesus? What hashtags do you think the media would use when talking about Jesus on social media?

Read Mark's accounts of the Easter story in Mark 15 & 16. Now sum up the Easter story as if it was a post on Twitter. Remember you can only use 280 characters, so choose your words wisely!

Share your Twitter account of Easter with your BB group or post on social media using #BBatHOME.



## WHAT YOU'LL NEED

- YouTube
- Pen / Paper



## NOTES FOR PARENTS & CARERS

An adult should initiate any contact with the BB group and/or share on social media.

# MY #BBatHOME CHALLENGE



GET INVOLVED



30 MINUTES



READY  
TO GO

## ▶▶ GETTING INTO THE ACTIVITY

Get involved with helping to plan and organise a #BBatHOME activity or challenge for your BB group.

It's important for BB Companies to keep in touch with their members whilst we are not able to meet - helping to keep members connected and part of the BB family. Support your Company to do that by coming up with an idea and setting a challenge for your group.

Think about what age group the challenge is designed for, make sure it is appropriate for that age, is suitable to be done at home with limited equipment and is fun and engaging for those taking part.

Write up your challenge or record a video with the instructions and a demonstration and send it to your BB group for them to then use as part of the activities and challenges. You can also post on social media using #BBatHOME.

Think your challenge could feature in a future #BBatHOME activity pack? Email your challenge to [bbathome@boys-brigade.org.uk](mailto:bbathome@boys-brigade.org.uk).



## WHAT YOU'LL NEED

- Depends on the challenge you create



## NOTES FOR PARENTS & CARERS

An adult should initiate any contact with the BB group and/or share on social media.

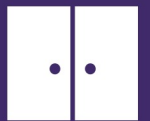
# JIGSAW PUZZLE



GET LEARNING



1 HOUR



IN THE CUPBOARD



## GETTING INTO THE ACTIVITY

Take some time to complete a jigsaw puzzle.

Select a jigsaw puzzle that you wish to do. Remember the more pieces the puzzle has the more challenging it will be. We suggest trying a puzzle with at least 500 pieces.

Find somewhere suitable to do the puzzle – it may take you a little while, so it needs to be somewhere you can leave the puzzle when you are not doing it.

Family members are welcome to help you out with the puzzle.

Once the puzzle is complete, take a photo and share it with your BB group or post on social media using #BBatHOME.



## WHAT YOU'LL NEED

- Jigsaw Puzzle (at least 500 pieces)



## NOTES FOR PARENTS & CARERS

An adult should initiate any contact with the BB group and/or share on social media.